

Technical Datasheet

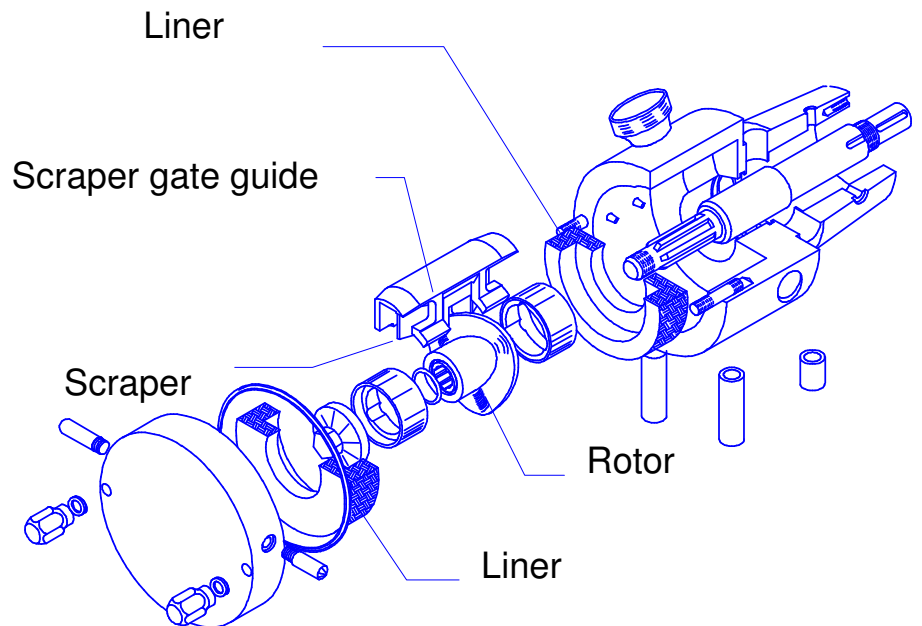
MASO-SINE-PUMP SPS 1“N



Operating Principle

Minimal rotating parts ensure ease of maintenance and the sinusoidal shape of the rotor creates the „chambers“ for product movement. With every revolution of the pump the four „chambers“ massage the product through the pump with no mechanical stress.

The scraper divides the suction and pressure sides and also forms the seal. In addition, it forces CIP fluids into all areas of the housing to ensure complete cleaning. It should be noted that alternative materials for scrapers are available, to suit different applications.



Materials of Construction

| | |
|---------------|--|
| Rotor: | Stainless Steel / hardened / with titanium coating |
| Housing: | Stainless Steel |
| Scraper: | MASOTRONIC |
| Liners: | Stainless Steel, MASOTRONIC |
| O-Ring: | Buna, EPDM, VITON, TEFLON |
| Shaft: | Stainless Steel |
| Lip Seal: | Buna, PTFE, VITON |
| Front Bushing | MASOTRONIC, Carbon |

Seal Systems

Single lip seal system
Triple lip seal system
Single mechanical seal

Connections

German milk fitting DIN 11851
Flange DIN 2633/2635
Industrial thread
Inch
SMS
Tri-Clamp
RJT
ANSI
Special connection upon request

Heating - Cooling

Heating or cooling for Housing
Front cover heating or cooling
Connections heating or cooling

Flushing of the seal

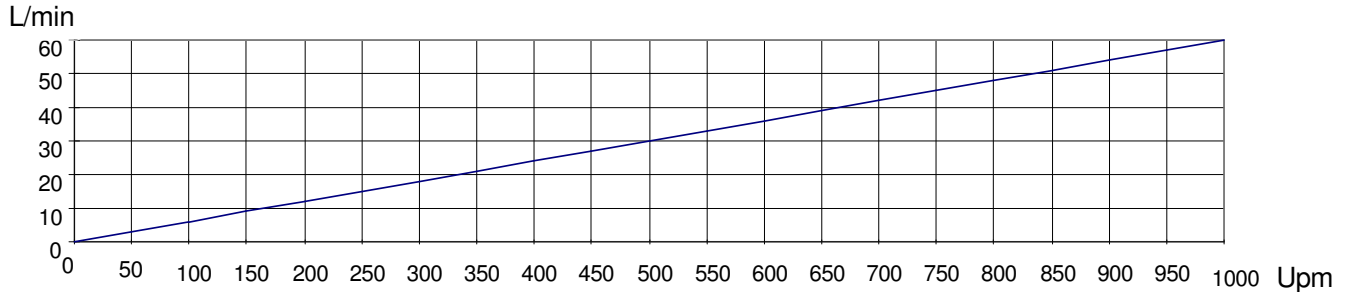
Dynamic flushing
Static flushing

Drives

Variable speed drives/elec. speed variation
 Helical gear motor
 Helical gear motor with frequency inverter
 Drives on request
 Without drives
 Explosion proofed drives

Base plates

Tube style base plate (stainless steel) with adjustable feet and compensators
 Base plate with wheels and brakes
 Special construction upon request



Speed
 max. 1000Upm

Temperature
 max. 140 °C
 (depending on specification)

Suction
 max. 0.9 bar

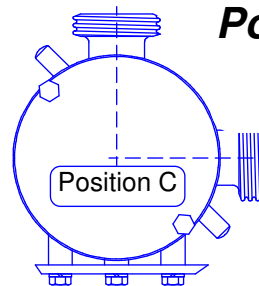
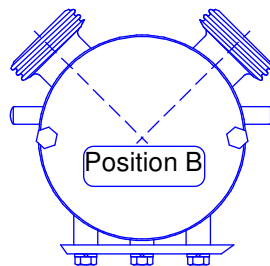
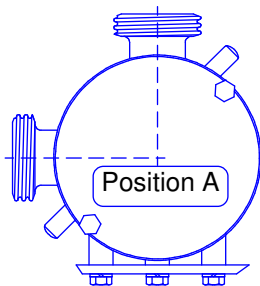
Particle sizes
 max. 5mm

Capacity
 0.06 Liter / revolution max.3600
 L/h in continous operation with water
 and 0 bar pressure

Pressure
 max. 15 bar

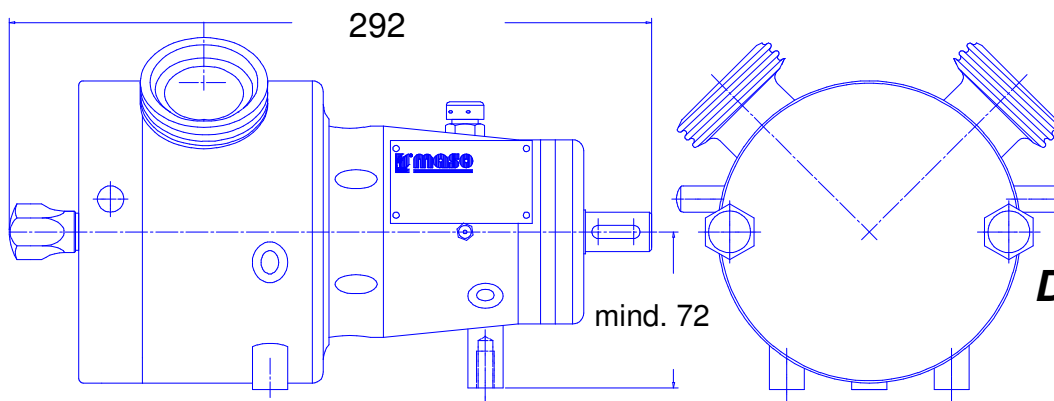
Viscosity
 over 1.000.000 CP

Cip-Cleaning
 fully suitable for CIP
 CIP-cleaning



Possible connection positions

Weight
 ca.15 kg
 (without drive)



Dimensions

If there are any questions, then please get in touch with us

MASO Process-Pumpen GmbH • Steinbeisstr. 3 • 74360 Ilsfeld • Postfach 100

☎ ++7062 / 9560-0 • Fax ++7062 - 64593

★ A German quality product ★

(Changes without notice)